

Carve out
a GREAT LIFE
at Habitat ”



HABITAT
ONE 54

An Urban Lifestyle
D E R E B A I L



HABITAT ONE 54

An Urban Lifestyle
D E R E B A I L

“Budget homes from Land Trades with attractive community living options”



Habitat One54 is your very own ecosystem, where you can live to the fullest. Coming from Land Trades, a name synonymous with quality, here you can enjoy a complete and secure community life on an affordable budget.

Situated amidst the peaceful environs of Derebail locality of Mangalore, Habitat One54 puts you within easy reach of all important places in the city. It is a well planned and intricately conceived mega residential development, crafted to perfection with years of experience in creating unique lifestyles. Its wide array of family-friendly facilities truly makes it a haven of happy living.

THE LIFESTYLE

YOU ARE MEANT TO LIVE

Open the doors to your dream life. Come home to Habitat One54.

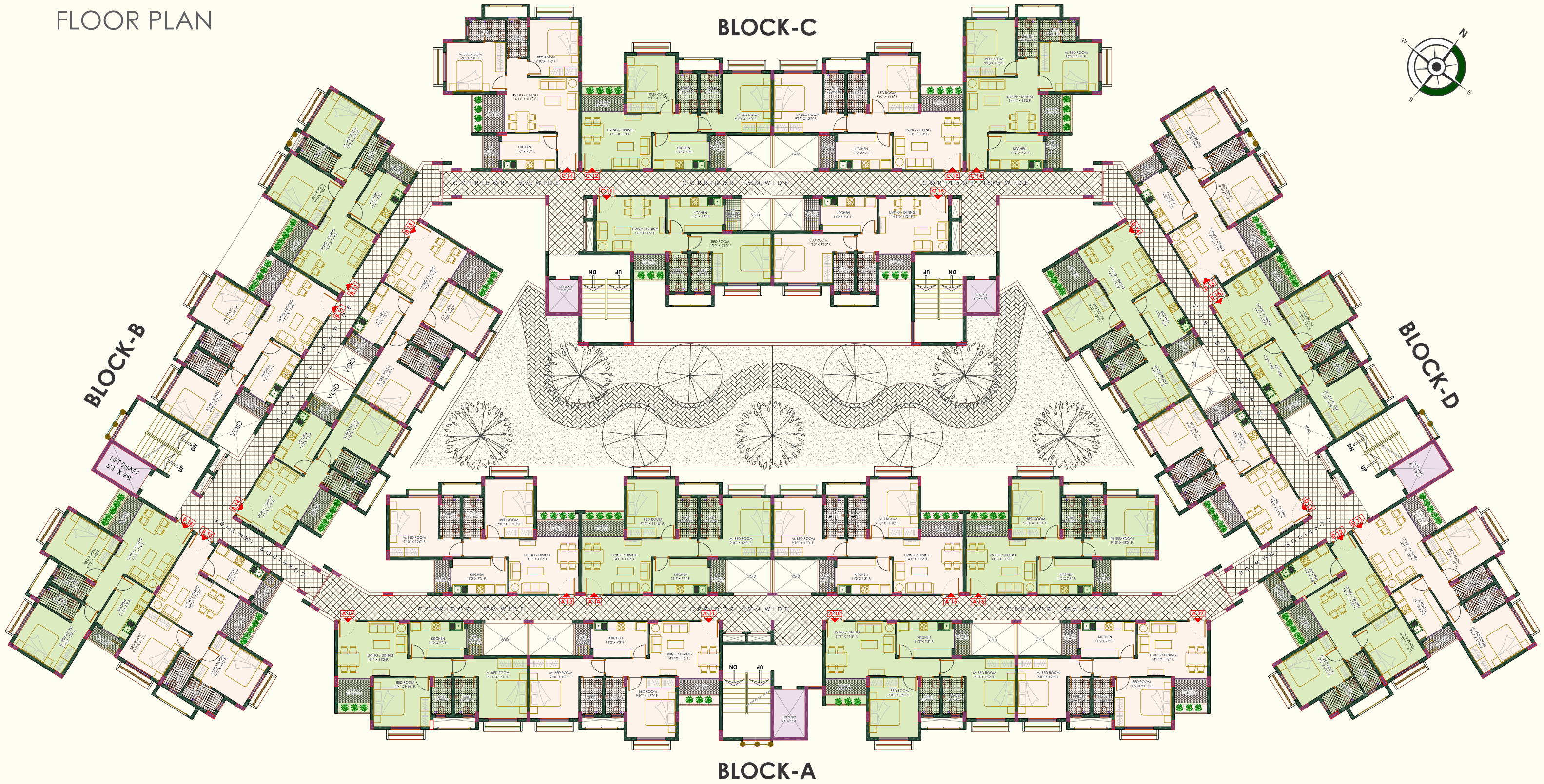
Choose a life
well lived at Habitat
because some choices
define you.

HABITAT
ONE 54

An Urban Lifestyle
DEREBAIL



TYPICAL FLOOR PLAN



FLAT	TYPE	AREA
A 01	2 BHK	975.00
A 02	2 BHK	980.00
A 03	2 BHK	975.00
A 04	2 BHK	970.00
A 05	2 BHK	975.00
A 06	2 BHK	975.00
A 07	2 BHK	980.00
A 08	2 BHK	980.00

FLAT	TYPE	AREA
B 01	2 BHK	975.00
B 02	2 BHK	965.00
B 03	2 BHK	975.00
B 04	1 BHK	770.00
B 05	2 BHK	970.00
B 06	2 BHK	975.00

FLAT	TYPE	AREA
C 01	2 BHK	975.00
C 02	2 BHK	970.00
C 03	2 BHK	970.00
C 04	2 BHK	975.00
C 05	1 BHK	770.00
C 06	1 BHK	770.00

FLAT	TYPE	AREA
D 01	2 BHK	975.00
D 02	2 BHK	970.00
D 03	1 BHK	770.00
D 04	2 BHK	975.00
D 05	2 BHK	955.00
D 06	2 BHK	965.00

GENERAL SPECIFICATIONS

- Residential Building of Ground plus Five Floors with two basement floors for car parking consists 154 no.s of units.(130 no.s - 2BHK & 24 no.s – 1BHK)
- RCC framed structure with Column, Beam and Slab layout
- Laterite stone masonry (8" thk) for External walls & Solid Block Masonry (4"thk) for Internal walls.
- Toilets are provided with sunken slabs with proper water proofing treatment and concealed pipelining
- Rustic Finished Tile flooring for common areas and Granite flooring for Staircases.
- Vetrified Tiled Flooring inside the Flats.
- Antiskid Tiled flooring for Balconies & Toilets.
- Designer Glazed Tiled wall surfaces in Toilets (Full Height) & Kitchen(2'0"above Platform)
- Granite Kitchen Platform with SS Sink with Drain Board
- Melamine Polished Decorative Main door consists of Hard wood Frame and designer Flush Door Shutter with Quality Fixtures at the Flat Entrance
- Painted Concrete Door Frames with Moulded Skin Shutters for Bedroom Doors with Quality Fixtures
- UPVC Frames with Fibrotech Shutters for Toilet Doors with Quality Fixtures
- Powder coated Aluminum sliding Doors for Balconies and Aluminum sliding Windows with safety Grills inside the Flats
- CP Plumbing Fittings in Toilets & Kitchens
- White Coloured Sanitary Wares in Toilets
- Provision of 2 KW power for Single BHK Flats and 3 KW Power for 2BHK Flats
- Modular Electrical Switches (Anchor or Equivalent) & Wires (RR/ V Guard / Anchor)
- Adequate Electrical Points in all the Rooms, Kitchens, Balconies, Toilets & in Common Areas
- Adequate Power Points in Kitchen & Toilets
- Electrical Fittings in Common Areas and in Carparking Yard
- Acrylic Putty Finished Distemper Painted Internal Ceiling & Walls
- Exterior Emulsion Painted External Walls
- Tiled Terrace floor, covered with Roof sheets for Recreation surrounded by 3'9" height masonry Parapet
- Interlock Paving or VDF Concrete Flooring for Driveway & Carparking Yard
- All round compound wall and Entrance Gate with security cabin
- Intercom facility from all apartments to Security
- CC Camera Network for Maximum Security
- Bore well Water arrangement in addition to the corporation water connection
- Generator Backup facility for Common Area Lightings, Services and lighting within the apartments except power lines.
- Fire Fighting Facility
- Drinking Water Filtration Plant / Sewage Treatment plant
- Reticulated Gas Connection
- Visitors Lounge
- Automatic Elevators, Total 5 in no. out of which 3 are 13 passenger capacity and 2 are 8 passenger capacity.
- Landscaped Building Surrounding and Central Court Yard.
- Children Play Area
- GYM
- Rain Water Harvesting System
- Solar water provision or Solar lighting for Yard.
- Provision for Cable TV Connection



C O M P L E T E D P R O J E C T S



Astoria
Balmatta, Mangalore



Orion
Lobo Lane, Mangalore



Aria
Alvares Road, Mangalore



Mercara Heights
Mercara Hill Road, Bendore, Mangalore



Olive
Bejai Kapikad, Mangalore



Eesha
Lobo Lane, Mangalore



Aadhee
Lobo Lane, Mangalore



Vijaya
Lobo Lane, Mangalore



Hathill Crest
Hat Hill, Mangalore



Sai Grandeur
Opp. Capuchin Fiary, Jail Road, Mangalore



Pushkar
Car Street, Mangalore



Ourania
Kadri Toll Gate, Mangalore



Minerva
Bejai, Mangalore



Danube
Balmatta Road, Mangalore



Serene
Bejai, Mangalore



Hillside Ferns
Shivbagh, Mangalore



Adonia
Alvares Road, Kadri, Mangalore



Maurishka Palace
Near CV Nayak Hall, Kadri Kambla, Mangalore



Aadheesh
Off M.G. Road, Mangalore



Brookside
Morgan's Gate, Mangalore



Sai Prem
Mannagudda, Mangalore



Atlantis
Bendoorwell, Mangalore



Vasundhara
Opp. Urva Marigudi Temple, Mangalore



Rehoboth
Bejai, Mangalore



Parin
Collector's Gate, Balmatta, Mangalore



Aquarius
Mallikatta, Mangalore



Roopali
Bendoorwell, Mangalore



Aashna
Yemmekere, Mangalore



Lenhil Ferns
Kadri, Mangalore



Sanskriti
Mangaladevi, Mangalore

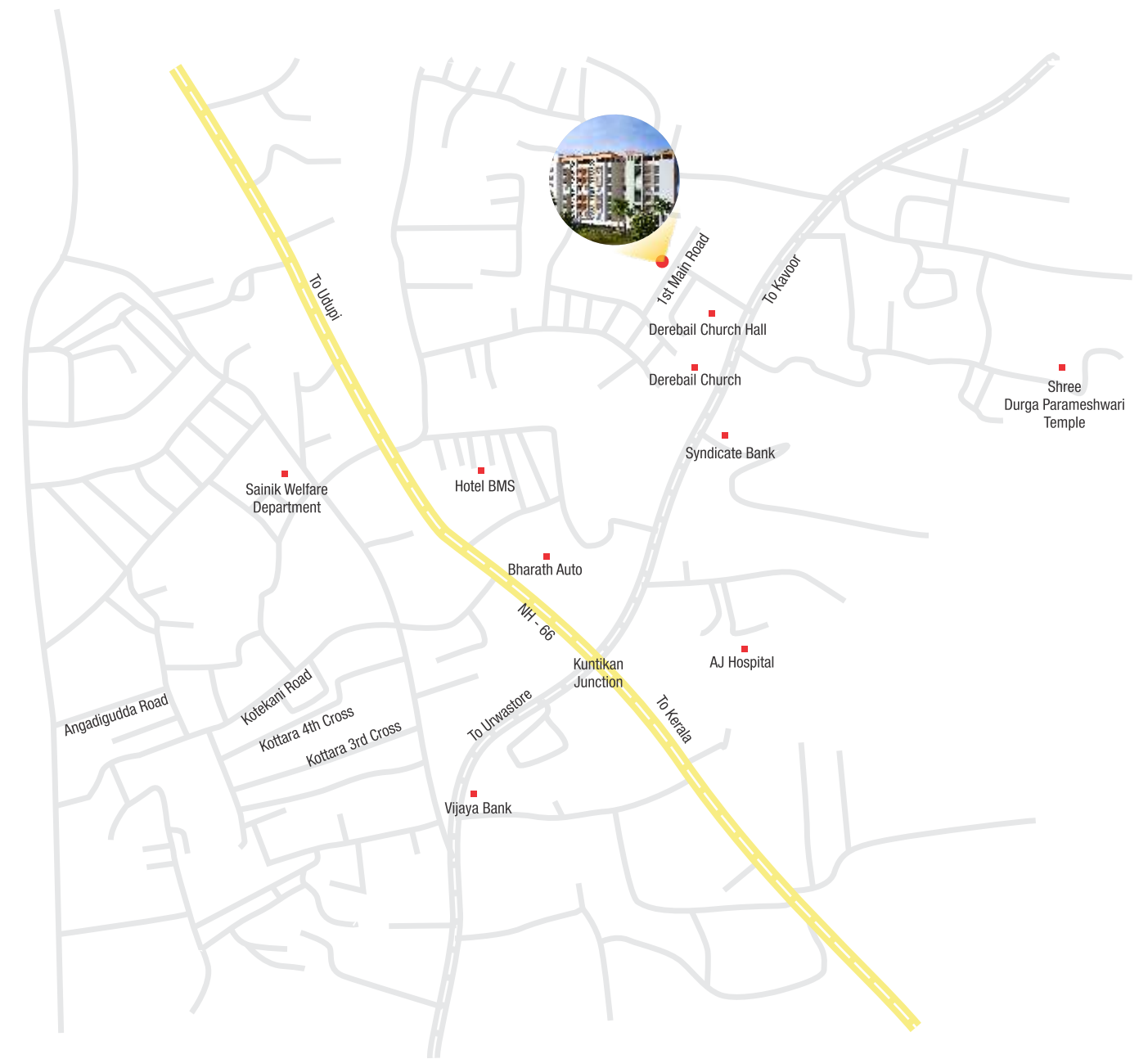


Melody
Near St. Theresa's School, Bendoor, Mangalore



Insignia
Valencia, Mangalore

L O C A T I O N - M A P



O N G O I N G P R O J E C T S



Solitaire
Hathill, Mangalore



Emerald Bay
Surathkal, Mangalore



Milestone 25
Balmatta, Mangalore

Promoters:



1st Floor, New Milagres Mansion, Falnir Road, Mangalore- 1
Phone : +91 824 242 5454 / 242 3866
E-mail : sales@landtrades.in, info@landtrades.in

Contractors:



Architects:

SUNIL SADEKAR
Mangalore

PMC:

GOKUL RAJ

Structural Consultants:

SHILP CONSULTING ENGG.

Legal Advisor:

SUNDAR RAO

For Bookings Contact:

+91 98861 99769 / +91 98807 42159 / +91 98450 84866



Find us on  /landtradesdevelopers

www.landtrades.in

DISCLAIMER: THIS BROCHURE IS CONCEPTUAL AND IS NOT A LEGAL DOCUMENT. ALL MATERIALS, DIMENSIONS & DRAWINGS ARE APPROXIMATE.
INFORMATION SUBJECT TO CHANGE WITHOUT NOTICE. ACTUAL USABLE FLOOR SPACE MAY VARY FROM THE STATED FLOOR PLAN.
DRAWINGS NOT TO SCALE. THE DEVELOPER RESERVES THE RIGHT TO MAKE REVISIONS.